

Hordozható kézi vezeték nélküli ultrahang készülék BMV MX3

Color Doppler készülék

C2L7(konvex+lineáris) cikkszám:

Jellemzők:

- Fejlett digitális képmegjelenítési technológia, tiszta képalkotás.
- Kiváló ár-érték arány.
- Kis méretek, könnyű hordozhatóság.
- Vezeték nélküli, kábel nélküli kivitel, szabad működés.
- Vízálló kialakítás, könnyen fertőtleníthető.
- Távdiagnosztika lehetősége, egyszerű képtovábbítás

Alapkiépítés:

- Vezeték nélküli vizsgálófej egység 1 készülék
- Beépített akkumulátor és töltőkábel 1 készlet
- Kezelési útmutató

Specifikáció:

- Képfelvételi mód: Elektronikus konvex vagy lineáris képfelvétel;
- Frekvenciák: Konvex vizsgálófej 3.5/5MHz, lineáris vizsgálófej 7.5/12MHz
- Vizsgálófejek elemszáma: 128
- Vizsgálati mélység: Konvex 90-305mm, Lineáris 20-100mm, beállítható
- Látómező: Konvex R60 mm, Lineáris 40 mm
- Képernyő: Okostelefon vagy tablet képernyő
- Támogatott operációs rendszerek: iOS, Android, Windows
- Megjelenítési módok: B, B/M, Color Doppler, Power Doppler, PW Doppler
- Képváltási frekvencia: 20 kép/másodperc
- Szűrskála fokozatok száma: 256 szint
- Kép/viedó tárolás: Tárolás mobiltelefonon vagy tablet számítógépen
- Mérések: távolság, felület, szülészeti mérések és egyébek;
- Tápfeszültség ellátás: beépített lítium akkumulátorral, 4200mAh
- Akkumulátoros működési idő: 3.0 óra
- Méretek: 156mm × 70mm × 25mm
- Nettó tömeg: 300 gramm



BMV Medical Group Co., Ltd



Add: 4/F, BMV of Yinjin Mansion, Block 71, Baoan Centre District, 518101,
Shenzhen, China. T:+86-755-2656-4580 F:+86-755-2656-4580 ext. 887

Website: www.bmv.cc; E-mail: sales@bmv.cc

Portable Pocket Wireless Ultrasound

BMV MX3

Color Doppler system

C2L7(convex+linear)

Features:

- Advanced digital imaging technology, clear image
- High cost-effective
- Small and small size, easy to carry.
- Wireless type without probe cable, working freely.
- Waterproof design, convenient for sterilization.
- Remote diagnostic convenience, capability and easy image transfer

Standard Configuration:

- Wireless probe device 1 Unit
- Built-in Battery and charge cable 1 Set
- User Manual / Operation Manual copy

Specifications:

- Scan mode: Electronic Array, Electronic Convex or linear array scanning;
- Frequency: Convex probe 3.5/5MHz, linear probe 7.5/12MHz
- Scanning Depth: Convex 90-305mm, Linear 20-100mm, adjustable
- Field of view: Convex R60, Linear L40
- Screen: Smart phone or tablet screen
- Supporting system: iOS, Android, Windows
- Display mode: B, B/M, Color, PDI, PW
- Frame rate: 20f/s
- Image gray scale: 256 level
- Image/Video Storage: Store on mobile phones, Tablet PC
- Measure: distance, area, obstetrics and other;
- Power: by built-in lithium battery, 4200mAh
- Battery working time: 3.0 hours
- Size: 156mm × 70mm × 25mm
- Net Weight: 300 gram

EC7C2-Endocavity/convex

Specifications:

- Probe Type: Consist by two of Convex, Transvaginal
- Scanning mode: Electronic array
- Display mode: B, B/M, color Doppler version with B+Color, B+PDI, B+PW
- Probe element: 128
- Channel of RF circuit board: 32
- Probe frequency and scan depth, head radius/width, scan angle(convex):
 - Convex head 3.5MHz/5MHz, 90/160/220/305mm, 60mm, 60°
 - Transvaginal head 6.5MHz/8MHz, 40/60/80/100mm, 13mm, 149°
- Image Adjust: BGain, TGC, DYN, Focus, Depth, Harmonic, Denoise, Color Gain, Steer, PRF
- Cineplay: auto and manual, frames can set as 100/200/500/1000
- Puncture assist function: the function of in-plane puncture guide line, out-of-plane puncture guide line, automatic blood vessel measurement.
- Measure: Length, Area, Angle, heart rate, Obstetrics
- Image save: jpg, avi and DICOM format
- Image frame rate: 18 frames/second
- Battery working time: 2.5 hours(according to whether keep scan)
- Battery charge: by USB charge or wireless charge, take 2 hours
- Dimension: 320×180×80mm
- Weight: 300g
- Wifi type: 802.11g/20MHz/5G/450Mbps
- Working system: Apple iOS and Android, Windows

EC7L7-Endocavity/linear 2 in 1

Specifications:

- Probe Type: Consist by two of linear, Transvaginal
- Scanning mode: Electronic array
- Display mode: B, B/M, color Doppler version with B+Color, B+PDI, B+PW
- Probe element: 128
- Channel of RF circuit board: 32
- Probe frequency and scan depth, head radius/width,
 - Linear head 7.5MHz/10MHz, 20~100mm, L=40mm,
 - Transvaginal head 6.5MHz/8MHz, 40/60/80/100mm, 13mm, 149°
- Image Adjust: BGain, TGC, DYN, Focus, Depth, Harmonic, Denoise, Color Gain, Steer, PRF
- Cine play: auto and manual, frames can set as 100/200/500/1000
- Puncture assist function: the function of in-plane puncture guide line,

-
- out-of-plane puncture guide line, automatic blood vessel measurement.
 - Measure: Length, Area, Angle, heart rate, Obstetrics
 - Image save: jpg, avi and DICOM format
 - Image frame rate: 18 frames/second
 - Battery working time: 2.5 hours(according to whether keep scan)
 - Battery charge: by USB charge or wireless charge, take 2 hours
 - Dimension: 320×180×80mm
 - Weight: 300g
 - Wifi type: 802.11g/20MHz/5G/450Mbps
 - Working system: Apple iOS and Android, Windows

PA10-2E-phased/convex/linear 3 in 1

Features:

- Advanced digital imaging technology, clear image
- High cost-effective
- Small and small size, easy to carry.
- Wireless type without probe cable, working freely.
- Waterproof design, convenient for sterilization.
- Remote diagnostic convenience, capability and easy image transfer

Standard Configuration:

- Wireless probe device 1 Unit
- Built-in Battery and charge cable 1 Set
- User Manual copy

Specifications:

- Scan mode: Electronic Array, convex with cardiac namely phased array or linear array scanning;
- Frequency: convex probe 3.5/5MHz,linear probe 7.5/10MHz
- Elements: 128 elements
- Scanning Depth: Convex 90-305mm,Linear 20-100mm, adjustable
- Field of view: Convex R60, Linear L40
- Screen: Smart phone or tablet screen
- Supporting system: iOS, Android, Windows
- Display mode: B, B/M, Color, PDI, PW
- Frame rate: 18f/s
- Image gray scale: 256 level
- Image/Video Storage: Store on mobile phones, Tablet PC
- Measure: distance, area, obstetrics and other;
- Power: by built-in lithium battery, 2800mAh
- Battery working time: 3 hours
- Size: 210mm×130mm×50mm

- Net Weight: 220 gram

C2(convex)

Features:

- Workable with Tablet PC or Smart Phone (iOS, Android, Windows)
- Built-in and replaceable battery
- Advanced digital imaging technology, clear image
- High cost-effective
- Wireless connectivity, easy to operate
- Small and light , easy to carry
- Applicable in hospital,emergency, clinic, outdoor and vet inspection
- Intelligent terminal platform, powerful expansion functions on application, storage

Standard Configuration:

- Wireless probe device 1 Unit
- Built-in Battery and charge cable 1 Set
- User Manual copy

Specifications:

Scan mode: Electronic Array, Electronic Convex array scanning;

- Frequency: convex probe 3.5MHz
- Elements: 128 elements
- Scanning Depth: Convex 100-305mm, adjustable
- Field of view: Convex R60
- Screen: Smart phone or tablet screen
- Supporting system: iOS, Android, Windows
- Display mode: B, B/M, Color, PDI, PW
- Frame rate: 18f/s
- Image gray scale: 256 level
- Image/Video Storage: Store on mobile phones, Tablet PC
- Measure: distance, area, obstetrics and other;
- Power: by built-in lithium battery, 4200mAh
- Battery working time: 3.5 hours
- Size: 210mm × 130mm × 50mm
- Net Weight: 200 gram

C2 HD(convex)

Features:

- Workable with Tablet PC or Smart Phone (iOS, Android, Windows)
- Built-in and replaceable battery
- Advanced digital imaging technology, clear image



-
- High cost-effective
 - Wireless connectivity, easy to operate
 - Small and light , easy to carry
 - Applicable in hospital, emergency, clinic, outdoor and vet inspection
 - Intelligent terminal platform, powerful expansion functions on application, storage, communication, printing

Standard Configuration:

- Wireless probe device 1 Unit
- Built-in Battery and charge cable 1 Set
- User Manual copy

Specifications:

- Scan mode: Electronic Array, Electronic Convex array scanning;
- Frequency: convex probe 3.5MHz
- Elements: 192 elements
- Scanning Depth: Convex 90-305mm,adjustable
- Field of view: Convex R60
- Screen: Smart phone or tablet screen
- Supporting system: iOS, Android, Windows
- Display mode: B, B/M, Color, PDI, PW
- Frame rate: 18f/s
- Image gray scale: 256 level
- Image/Video Storage: Store on mobile phones, Tablet PC
- Measure: distance, area, obstetrics and other;
- Power: by built-in lithium battery, 4200mAh
- Battery working time: 5 hours
- Size: 210mm × 130mm × 50mm
- Net Weight: 200 gram

L7(Linear)

Features:

- Workable with Tablet PC or Smart Phone (iOS, Android, Windows)
- Built-in and replaceable battery
- Advanced digital imaging technology, clear image
- High cost-effective
- Wireless connectivity, easy to operate
- Small and light , easy to carry
- Applicable in hospital,emergency, clinic, outdoor and vet inspection
- Intelligent terminal platform, powerful expansion functions on application, storage

Standard Configuration:



-
- Wireless probe device 1 Unit
 - Built-in Battery and charge cable 1 Set
 - User Manual copy

Specifications:

Scan mode: Electronic Array, Electronic Linear array scanning;

- Frequency: Linear probe 7.5MHz / 10MHz
- Elements: 128 elements
- Scanning Depth: Convex 20-90mm, adjustable
- Field of view: Convex L40mm
- Screen: Smart phone or tablet screen
- Supporting system: iOS, Android, Windows
- Display mode: B, B/M, Color, PDI, PW
- Frame rate: 18f/s
- Image gray scale: 256 level
- Image/Video Storage: Store on mobile phones, Tablet PC
- Measure: distance, area, obstetrics and other;
- Power: by built-in lithium battery, 4200mAh
- Battery working time: 3.5 hours
- Size: 210mm × 130mm × 50mm
- Net Weight: 200 gram

L7 HD(linear)

Features:

- Workable with Tablet PC or Smart Phone (iOS, Android, Windows)
- Built-in and replaceable battery
- Advanced digital imaging technology, clear image
- High cost-effective
- Wireless connectivity, easy to operate
- Small and light , easy to carry
- Applicable in hospital, emergency, clinic, outdoor and vet inspection
- Intelligent terminal platform, powerful expansion functions on application, storage, communication, printing

Standard Configuration:

- Wireless probe device 1 Unit
- Built-in Battery and charge cable 1 Set
- User Manual copy

Specifications:

- Scan mode: Electronic Array, Electronic Linear array scanning;
- Frequency: Linear probe 7.5MHz/10MHz



-
- Elements: 192 elements
 - Scanning Depth: Convex 90-305mm,adjustable
 - Field of view: Convex R60
 - Screen: Smart phone or tablet screen
 - Supporting system: iOS, Android, Windows
 - Display mode: B, B/M, Color, PDI, PW
 - Frame rate: 18f/s
 - Image gray scale: 256 level
 - Image/Video Storage: Store on mobile phones, Tablet PC
 - Measure: distance, area, obstetrics and other;
 - Power: by built-in lithium battery, 4200mAh
 - Battery working time: 5 hours
 - Size: 210mm × 130mm × 50mm
 - Net Weight: 200 gram

Product Configuration

Standard Configuration: Wireless Ultrasound Scanner x 1 unit,
USB Charging Cable x 1pc, Carrying Bag or Aluminium Suitcase(options) x 1pc.
Optional: Stainless Steel Puncture Guide, Android or iOS Phone/Tablet,
Wireless Power Bank, Tablet Bracket, Trolley

B/W system

L7E(linear)

Features:

- High cost-effective
- Wireless connectivity, easy to operate
- Small and light, easy to carry
- Applicable in emergency, clinic, outdoor and vet inspection
- Intelligent terminal platform, powerful expansion functions on application, storage, communication, printing

Specifications:

- Scanning mode: Electronic array, Linear array probe
- Probe element: 80
- Display mode: B, B/M
- Frequency: 7.5MHz
- Scan Depth: 20-100mm
- Image Angle: 60°
- Image Adjust: Gain, DYN, Focus, Depth, Harmonic, noise reduction



- Puncture assist function: the function of in-plane puncture guide line, out-of-plane puncture guide line, automatic blood vessel measurement, and the enhancement function of needle point development.
- Cine play: auto and manual, frames can set as 100/200/500/1000
- Measure: Length, Area, Angle, Obstetrics
- Image frame rate: 18 frames/second
- Image save format: jpg, avi and DICOM
- Battery working time: 3 hours
- Charge: by USB or by wireless charger
- Dimension: 210mm × 130mm × 50mm
- Weight: 200g
- WiFi type: 802.11g/20MHz/2.4G/450Mbps
- Working system: Apple iOS and Android, Windows

C2E(convex)

Features:

- High cost-effective
- Wireless connectivity, easy to operate
- Small and light, easy to carry
- Applicable in emergency, clinic, outdoor and vet inspection
- Intelligent terminal platform, powerful expansion functions on application, storage, communication, printing

Specifications:

- Scanning mode: Electronic array, convex array probe
- Probe element: 80
- Display mode: B, B/M
- Frequency: 7.5MHz
- Scan Depth: 90-305mm
- Image Angle: 60°
- Image Adjust: Gain, DYN, Focus, Depth, Harmonic, noise reduction
- Puncture assist function: the function of in-plane puncture guide line, out-of-plane puncture guide line, automatic blood vessel measurement, and the enhancement function of needle point development.
- Cine play: auto and manual, frames can set as 100/200/500/1000
- Measure: Length, Area, Angle, Obstetrics
- Image frame rate: 18 frames/second
- Image save format: jpg, avi and DICOM
- Battery working time: 3 hours
- Charge: by USB or by wireless charger
- Dimension: 156 × 60 × 20mm
- Weight: 200g



-
- WiFi type: 802.11g/20MHz/2.4G/450Mbps
 - Working system: Apple iOS and Android, Windows

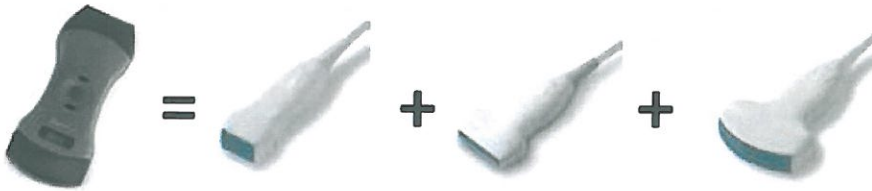
BMV Medical Group Co., Ltd



Add: 4/F, BMV of Yinjin Mansion, Block 71, Baoan Centre District, 518101,
Shenzhen, China. T:+86-755-2656-4580 F:+86-755-2656-4580 ext. 887
Website: www.bmv.cc; E-mail: sales@bmv.cc

MX3

Three/Two transducers. One probe.



MX3 Multiprobe Series scanners are pocket-sized ultrasound with three/two transducers in one probe, speed diagnostic decisions for a wide range of clinical applications.



CE Certificated



Cardiac ultrasound probe in your pocket

With only about 260g (0.6lbs), it contains everything you need to image a full human body, especially for cardiac imaging. Put it in your pocket and bring it to the bedside of every patient. Designed for more remote and efficient diagnosis.

Three transducers imaging power

Complete shallow, deep and cardiac scans without switching probes or compromising on image quality.

Insight right in your pocket

Supports early diagnosis and helps you quickly decide on next steps.

Comprehensive Clinical Solution

Cardiology, Emergency Medicine, Primary Care/ Internal Medicine, Urology, Women's Health, Vascular, Critical Care, Medical School Education



PA10-2E

Phased+Linear+Convex 1 transducer.

Frequency: Convex+Phased 3.5MHz/5MHz
Linear 7.5MHz/10MHz
Max Depth: 305mm/100mm

Applications:

bedside cardiac, ABD vascular access.
Breast, MSK, Nerve, Ocular,
Small Parts, Anesthesia



C2L7

Linear+Convex 1 transducer.

Frequency: Convex 3.5MHz/5MHz
Linear 7.5MHz/12MHz
Max Depth: 305mm/100mm

Applications:

Ideal for:
Abdominal, OB/GYN, thyroid, carotid, Lung,
superficial, MSK, nerve, Urology, kidney, etc.



EC7C2

Endocavity-Convex transducer.

Frequency: Endocavity-6.5MHz/8.5MHz
Convex 3.5MHz/5MHz
Max Depth: 100mm/305mm

Applications:

Abdominal, OB/GYN, Superficial, Vascular



EC7L7

Endocavity-Linear transducer.

Frequency: Endocavity-6.5MHz/8.5MHz
Linear 7.5MHz/10MHz
Max Depth: 100mm/100mm

Applications:

Vascular, Lung, Breast, MSK, Nerve, Ocular,
Small Parts / Animals, Anesthesia



BMV Medical Group Co., Ltd

Manufacturer of specialty medical devices across
medical and veterinary fields since 2008.

Shenzhen Qianhai headquarters
Add: 4/F, Yinjin Building, Block 71, Baoan Centre District,
Shenzhen, China
Tel: +86 75526564580
W: www.bmv.cc www.bmv-vet.com
Hong Kong Branch
Address: 5 / F, Lianwei Commercial Building, 283 Queen's
Road Central, Hong Kong
Tel: (00852)28510669
Email: sales@bmv.cc

European Sales Department
Add: Branimirova 68, Zagreb, CROATIA
Tel: (385)318590556
Email: export@bmv.cc

U.S. Sales Department
Add: 521 Vista Way Suite 358 Oceanside,
CA 92056
Tel: (619) 647-2887
Email: sales@bmv.cc



MX3

High-frequency point-of-care ultrasound machine for healthcare pros.

CE

CE Certificated




BIV

POINT-OF-CARE IMAGING IN YOUR POCKET.

With only about 230g (0.5lbs), this MX3 scanner enables clinicians to easily image patients at the point of care. Put it in your pocket and bring it to the bedside of every patient.

SEE MORE. TREAT FASTER.

A wireless, lightweight handheld ultrasound system that enables the flexible Performance of whole body scanning and delivers crystal-clear images. MX3 is easy to use, intuitive to navigate and optimized for your mobile device.



UP TO 10MHZ PROBE ULTRASOUND

MX3 linear probe ultrasound provides 2 levels of high frequency: 7.5MHz and 12MHz, perfect for vascular access, breast, thyroid and carotid. Especially for MSK application, 73% of our customers are podiatrists or foot & ankle specialists, and have utilized our probe in sports center and foot clinics.

2.5X FASTER

2-hour flash recharge for every your emergent shift.
With only 260g (0.6lbs), we're way more portable than others.
No cloud storage. Save data on your own device.
No extra fees for any service, one-time purchase for all you need.



C2 L7 HD:192 elements Linear/Convex
C2 L7:128 elements Linear/Convex
Frequency:3.5-10MHz
Designed for abdominal scanning and MSK, Nerve, Ocular,Small Parts



C2E L7E B/W systems
Frequency:3.5-10MHz
Designed for abdominal scanning and MSK, Nerve, Ocular,Small Parts



BMV Medical Group Co., Ltd

Manufacturer of specialty medical devices across medical and veterinary fields since 2008.

Shenzhen Qianhai headquarters
Add: 4/F, Yinjin Building, Block 71, Baoan Centre District, Shenzhen, China
Tel: +86 75526564580
W: www.bmv.cc www.bmv-vet.com
Hong Kong Branch
Address: 5 / F, Lianwei Commercial Building, 283 Queen's Road Central, Hong Kong
Tel: (00852)28510669
Email: sales@bmv.cc

European Sales Department
Add: Branimirova 68, Zagareb, CROATIA
Tel: (385)318590556
Email: export@bmv.cc

U.S. Sales Department
Add: 521 Vista Way Suite 358 Oceanside, CA 92056
Tel: (619) 647-2887
Email: sales@bmv.cc

